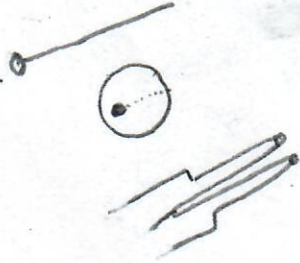


How To Make A Bead Button

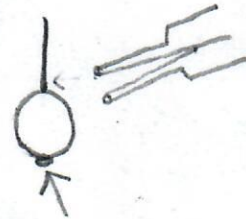
THL Sonya Blackrune



① Bead, Head pin, Needle-nose Pliers



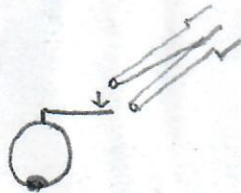
② Insert Head pin into bead.



③ Keep Pin and Bead flush while using Pliers.



④ Bend 90° to secure



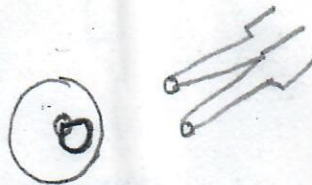
⑤ Start at end, use pliers to turn pin back to start loop.



⑥ Carefully working down, bend pin back around pliers to form loop body.



⑦ Finish loop by inserting back into hole of bead



⑧ Tighten gently to finish shank



⑨ Can use a dab of fabric glue on back to secure shank.

E6000